

Best™ Theratronics



Best™ GammaBeam Systems have been saving lives of cancer patients for over 60 years around the world!

Best™ GammaBeam 300 Equinox External Beam Therapy System



The GammaBeam 300 Equinox is an evolution of the Theratron line of treatment devices. The advanced design provides freedom in treatment planning and can interface to all of the major record and verify systems to allow for rapid treatment parameter loading, treatment set up verification, and the recording of the delivery.



Best™ Motorized Equinox Multi-Leaf Collimator 60

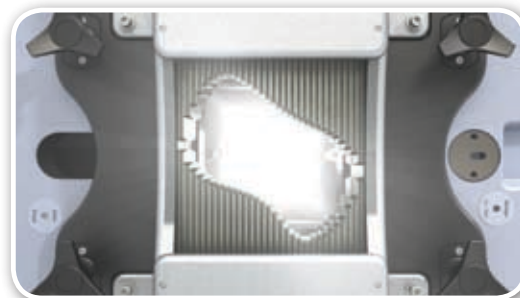
The Multi-Leaf Collimator 60 is available as an optional accessory for the Equinox product line, providing 3D Conformal Radiation Therapy (3D CRT) and Intensity Modulated Radiation Therapy (IMRT) capability. The intuitive user interface incorporates a patient database, record and verify functionality, and is DICOM-RT compatible for treatment plan imports.

GammaBeam™ saving lives

Best™ HDR Afterloader*



- Provides 20 channels for dose delivery
- Battery back-up in case of power failure & automated wire recovery
- Treatment data maintained in case of failure & treatment resumed after fix
- Quick source replacement process thereby reducing down time
- Available with Cobalt-60 or Iridium-192 sources. Also, Ytterbium-169 source available soon!



* Product shown is not available for sale currently.

Best Theratronics Ltd. © 2019

Best Theratronics Ltd. 413 March Road, Ottawa, ON K2K 0E4 Canada
tel: 613 591 2100 fax: 613 591 6627 www.theratronics.com www.teambest.com

AFRICA | ASIA | EUROPE | LATIN AMERICA | MIDDLE EAST | NORTH AMERICA